



coordinating decorative
accent ideas

Tumbled Stone
Coral/ Walnut/Sand TS94
Pebble Accent Strip



Morlais
Universal ML10
Decorative Accent



Metal Ages
Polished Pewter MA11
Corbel Accent Strip



Cristallo Glass
Black Opal CR53
Vine Accent



field tile

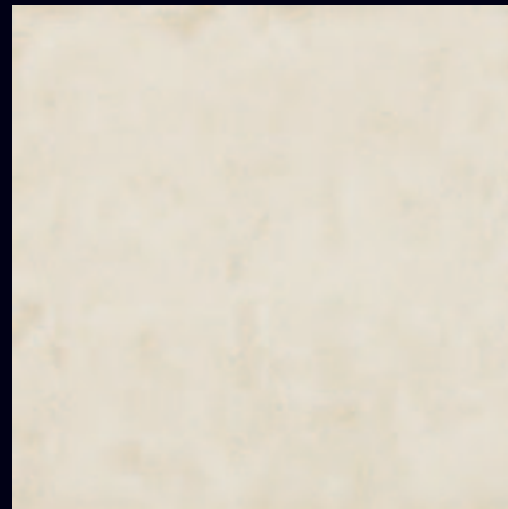
GROUP 1 - CLASSICO

Parma P020 (1)



GROUPS 2 & 3 - SOFISTICATO

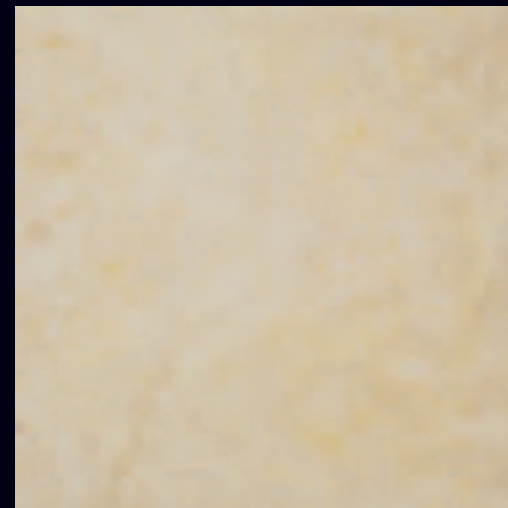
Bianco P032 (3)



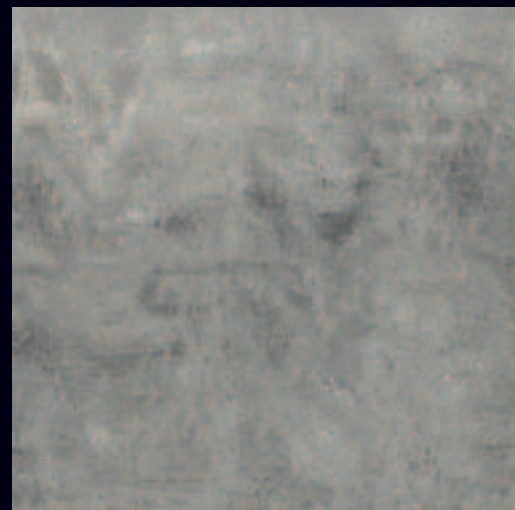
Sabbia P024 (2)



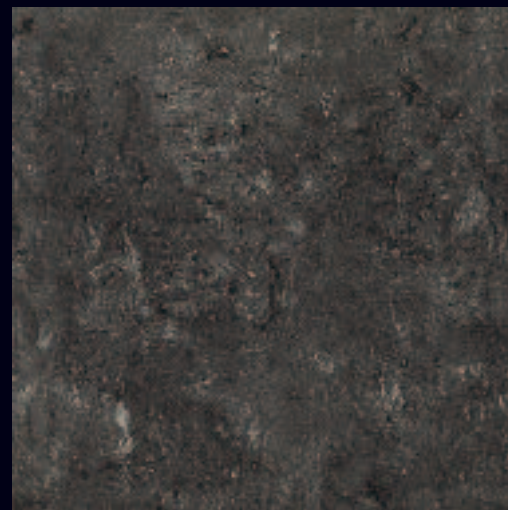
Crema P022 (2)



Grigio P021 (2)



Ardesia P027 (2)

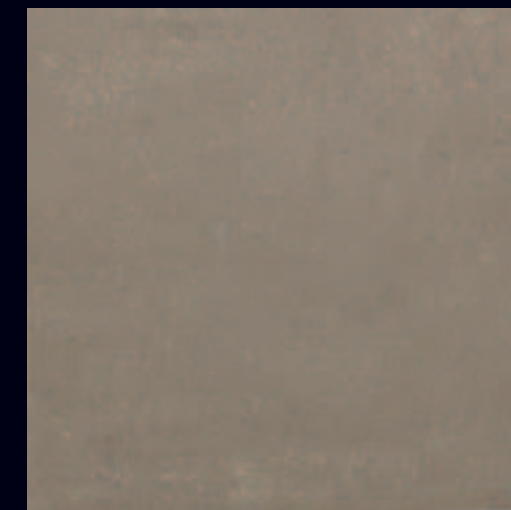


PROFESSIONAL TILE SOLUTIONS (PTS)

Ghiaccio P026 (3)



Corda P033 (3)



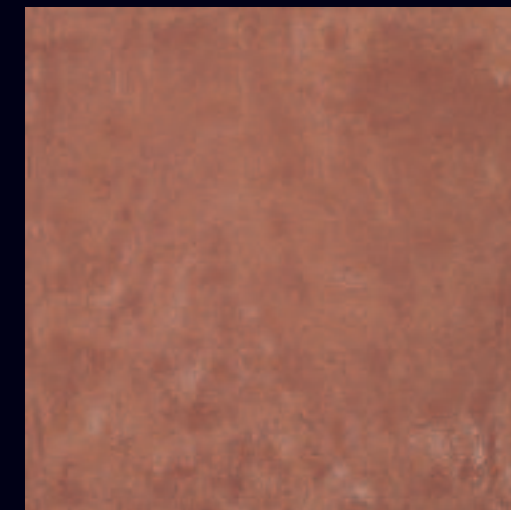
Terra P034 (4)



Blu P030 (4)



Rosso P028 (3)



NOTES

Stocked Colors & Sizes:

Colors - P020, P021, P022, P024, P027, and P032
 Sizes - 12" x 12" Polished & Unpolished
 12" x 24" Polished & Unpolished
 4" x 12" Bullnose Polished & Unpolished
 6" x 12" Cove Base
 1" x 6" Cove Base Corner

PTS Colors & Sizes:

Colors - P026, P028, P030, P033, and P034

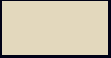




Sizes -
 All stocked field tile sizes plus 18" x 18" Polished & Unpolished
 and 4" x 12" Bullnose Polished & Unpolished

Also PTS:

18" x 18" Polished & Unpolished in these stocked colors -
 P021, P022, P024, P027, and P032



sizes:

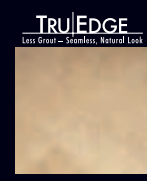
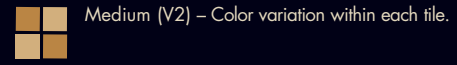
-  12" x 24" Field Tile (Polished & Unpolished)
Nominal: 11-11/16" x 23-3/4"
Nominal: 29.7 cm x 60.3 cm
5/16" thick
Sq. ft. per carton: 11.62
Pieces per carton: 6
 -  12" x 24" Field Tile (Polished & Unpolished) (P020 only)
Nominal: 11-3/4" x 23-15/16"
Nominal: 29.8 cm x 60.8 cm
3/8" thick
Sq. ft. per carton: 15.49
Pieces per carton: 8
 -  18" x 18" Field Tile (Polished & Unpolished)*
Nominal: 17-11/16" x 17-11/16"
Nominal: 44.9 cm x 44.9 cm
5/16" thick
Sq. ft. per carton: 10.89 Unp. 13.07 Pol.
Pieces per carton: 5 Unp. 6 Pol.
 -  12" x 12" Field Tile (Polished & Unpolished)
Nominal: 11-11/16" x 11-11/16"
Nominal: 29.7 cm x 29.7 cm
5/16" thick
Sq. ft. per carton: 11.62
Pieces per carton: 12
 -  12" x 12" Field Tile (Polished & Unpolished) (P020 only)
Nominal: 11-3/4" x 11-3/4"
Nominal: 29.8 cm x 29.8 cm
3/8" thick
Sq. ft. per carton: 10.65
Pieces per carton: 11
- Grout joint recommendation: 1/16"
(1/8" when used in a pattern)
- *Not available in P020 Parma.

approved usage:
Floors, Walls, Countertops & Exteriors

F	W	C	E
Floors	Walls	Countertops	Exteriors

Water, oil, grease, etc. create slippery conditions. Floor applications with exposure to these conditions require extra caution in product selection. For additional product information, refer to "Factors to Consider" at www.daltile.com/ResidentialFactors. Not for use on ramps.

shade variation:



Each tile is rectified and modular which allows for the use of smaller grout joints



Photo features Diamante in Rosso 18" x 18" polished.




durability:
Floor Wear Resistance

1	Residential Bathrooms
2	All Residential Areas
3	All Residential/Light Commercial
4	All Residential/Commercial

slip resistance (wet):
The higher the rating, the higher the slip resistance

1	<.50
2	.50 - .59
3	≥.60 (Unpolished)

trim detail:

Type	Number	Size
 Bullnose	S-44C9	4" x 12"
 Cove Base	S-36C9TB	6" x 12"
 Outcorner	SC-36C9TB	1" x 6"

tile pattern guide

Modular Pattern	Grid Pattern
Brick Pattern	Diamond Pattern

Note: P020 Parma cannot be used with other Diamante colors.
Special care should be taken when grouting with dark pigmented colors. A grout release is recommended to prevent finely powdered pigments from lodging in the pores of the tile surface. Use of a latex modified thin-set is recommended for installation.
Special care needs to be given when installing tiles 20" and larger. Please refer to www.daltileproducts.com/LargeTiles for information.
Since there are variations in all fired ceramic products, tile and trim supplied for your particular installation may not match these samples. Final color selection should be made from actual tiles and trim and not from tile samples or color reproductions. Manufactured in accordance with ANSI A137.1 standards.



7834 C.F. Hawn Freeway
Dallas, TX 75217
214-398-1411, 800-933-TILE
For more information about Daltile products and services, visit our website at daltileproducts.com