

UNGLAZED QUARRY TILE IN TWO DURABLE, SLIP-RESISTANT, THROUGH-BODY COLORS.



- FOR USE INDOORS AND OUTDOORS
- COMMERCIAL STRENGTH - 1/2" THICK
- RELIEVED EDGES RESIST CHIPPING
- EXTRUDED/DIE-SKIN BODY RESISTS BREAKING

UNGLAZED QUARRY TILE IS THE PERFECT ANSWER FOR INSTALLATIONS THAT NEED ADDED DURABILITY AND SLIP RESISTANCE LIKE THE ABOVE COMMERCIAL KITCHEN.

AGGREGATE SURFACE  
QUARRY TILE

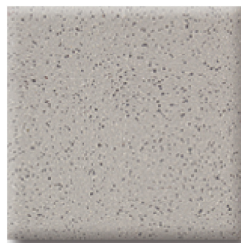


CLEAR TONE



GRAY  
AVAILABLE IN  
6"x6"x1/2" & 8"x8"x1/2"

AGGREGATE SURFACE



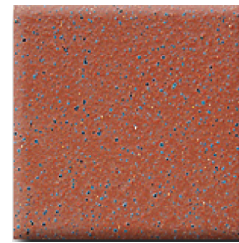
GRAY ABRASIVE  
AVAILABLE IN  
6"x6"x1/2"

CLEAR TONE



RED  
AVAILABLE IN  
6"x6"x1/2" & 8"x8"x1/2"

AGGREGATE SURFACE

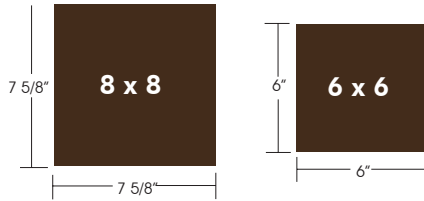


RED ABRASIVE  
AVAILABLE IN  
6"x6"x1/2"

FOR EVEN MORE SLIP RESISTANCE  
AN AGGREGATE SURFACE PRODUCT IS AVAILABLE

UNGLAZED QUARRY TILE IN TWO DURABLE, SLIP-RESISTANT ,THROUGH-BODY COLORS.

**Size Availability**



At time of manufacture, Emser Quarry Tile meets or exceeds measure of 0.70 dry and 0.60 wet for ASTM C1028 Static Coefficient of Friction test. X-Colors meet or exceed measure of 0.90 dry and 0.70 wet at time of manufacture.

**Installation Specifications**

A typical specification to assure the use of Emser Tile unglazed quarry tile on your next job should be written as follows:

Ceramic tile shall be Emser Tile, "unglazed quarry tile". The body composition shall be of the finest shales and clays producing a uniform dense body with slip-resisting texture. Color shall be: \_\_\_\_\_ Sizes shall be: \_\_\_\_\_ Patterns: as per drawing. Grout: compatible colors as approved by the architect. Test results shall be available upon request

For best installation results we recommend the following be included in the specification: Nominal 3/8" joint widths. Mix tile from several cartons for best shading during installation. Do not use any product containing Hydrofluoric acid to clean since it will attack both grout and tile.

**Cleaning and Maintenance**

Initial Cleaning and Seasoning It is the installers responsibility to thoroughly clean and remove all grout or mortar from the new tile surface.

Because grout joints are porous and highly susceptible to staining, you may wish to protect them with an application of a penetrating sealer, such as Florida Brick and Clay's Natural Clay Products Penetrating Sealer.

If the floor will be subject to frequent staining by fat, oil, or grease, you may wish to apply the penetrating sealer to the tile as well. Follow the manufacturers directions carefully. Seal the floor only after it is thoroughly cleaned and before seasoning the floor.

Season the floor by mopping thoroughly with a double strength application of neutral liquid cleaner.

**Recommended Maintenance**

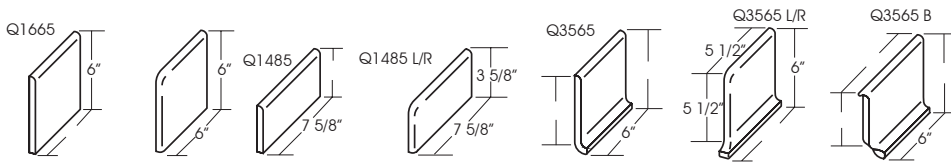
Sweep, vacuum or damp mop as necessary to remove dust, dirt and grit.

Remove heavy spills or spots immediately with a heavy detergent and stiff brush or a non-metallic scouring pad. Routinely mop the surface with a neutral liquid cleaner. Use a simple two bucket method- one bucket containing the diluted cleaner and the other containing clear water. Mop in small areas and change the rinse water regularly.

Mop up any dirty cleaning solution and allow the floor to dry thoroughly. Under normal conditions, rinsing is not necessary. However, if the surface is extremely dirty, it should be allowed to dry and mopped again. Over time a natural patina will develop. It can be enhanced with a soft buffing.

For applications in restaurants/cafeteria service and dining areas, at least once per week- and more often if necessary- the floor should be scrubbed with a solution of Hillyard's assurance® all purpose cleaner or a comparable product and a scrub brush.

**Trim**



**Test Results**

By ANSI Standard Specification A137.1 Emser's unglazed tile is classified as quarry tile, however, the exceptional technical characteristics noted enable quarry tile to be used in virtually any application suitable for tile.

Emser's unglazed tile meets both the ASTM standards, the ANSI A137.1 specification, and internal requirements as listed, for quarry tile.

Specification	Test	Standard	Result
Abrasion Resistance	ASTM C501	Index of 35 or better	Tests at >80 or better.
Absorption 5-hour boil	ASTM C373	5%	Tests at 3% maximum and qualifies as vitreous.
Breaking Strength	ASTM C648	Min.250 lbs.	Tests at 400 lbs. or better.
Compressive Strength	ASTM C67	No industry standard	Tests at 10,000 P.S.I. or better.
Facial Size Variation	ASTM C499	Average facial dimension of each tile not to exceed 4%	Meets the standard.
Freeze/ Thaw	ASTM C67	No industry standard	ASTM internal test is 50 cycles.
	internal test	Internal standard is 3000 cycles.	
Shear Bond Strength	ASTM C482	50 P.S.I. or better	Exceeds the standard.
Static Coefficient of Friction	ASTM C1028	No industry standard	At time of manufacture, Emser's unglazed quarry tile meets or exceeds measure of 0.70 dry and 0.60 wet. X-COLORS meet or exceeds 0.90 dry and 0.70 wet at time of manu-
Thickness	ASTM C499	Max.range of .050"	Meets the standard.
Warpage	ASTM C485	Max. 1.5% along any edge,Meets the standard. 1.0% on either diagonal.	
Wedging	ASTM C502	Max. 1.0%	Meets the standard.